

# Selector's Edge

Providing Site Selectors with cutting edge information about Clearfield County, Pennsylvania

## Contact

Clearly Ahead Development  
511 Spruce Street, Suite 5  
Clearfield, Pennsylvania 16830  
Phone: 814-768-7838  
www.clearlyahead.com

**Rob Swales, CEO**  
rswales@clearlyahead.com



**Paul McCloskey**  
VP of Energy and  
Business Development  
pmccloskey@clearlyahead.com



## UK Company Selects Clearfield, PA for its First US Manufacturing Operation

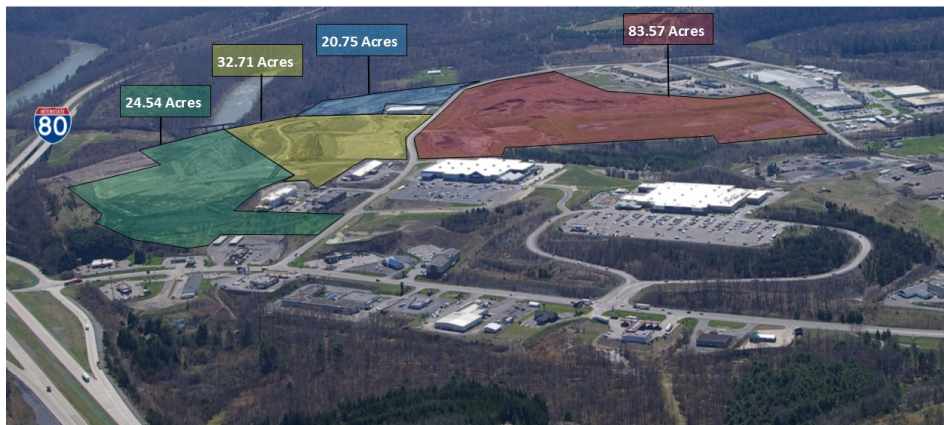
Makin Metal Powders Ltd., a United Kingdom-based raw material manufacturer of metal powders, selected Pennsylvania as the location for its first manufacturing operation in North America. The new, 75,000 square-foot facility will be in the Clearfield Commerce Park in Lawrence Township. Makin Metal Powders plans to invest nearly \$10 million into the project and is expected to create at least 40 manufacturing jobs at the time of startup. To view the entire article please visit [www.clearlyahead.com](http://www.clearlyahead.com).



## 162-Acre Certified Site Clearfield Commerce Park, PA

- ◆ Located in Central PA immediately off Interstate 80, Exit 120
- ◆ Industrial Limited Special Zoning
- ◆ Food Site Certified
- ◆ Highway Visibility
- ◆ 162-Acres-KOZ (Tax-Free Land)
- ◆ Infrastructure: access roads, overhead and underground electric (34.5/19.9 kV 3 Phase Distribution), telecommunications, water (12" main), sewage (10" with capacity of 4.5 MGD), and natural gas services (4" line with potential 100 PSI)
- ◆ Industrial and Commercial lots

- ◆ [Commerce Park Video and Downloadable Content](#)
- ◆ [Commerce Park Interactive Story Book Content](#)
- ◆ [Commerce Park LoopNet Listing](#)



**Clearly Ahead**  
Development



This email was sent by [censminger@clearlyahead.com](mailto:censminger@clearlyahead.com)  
Removal with [Unsubscribe](#) by replying "remove"  
Clearly Ahead Development | 511 Spruce Street Suite 5 | Clearfield, PA 16830